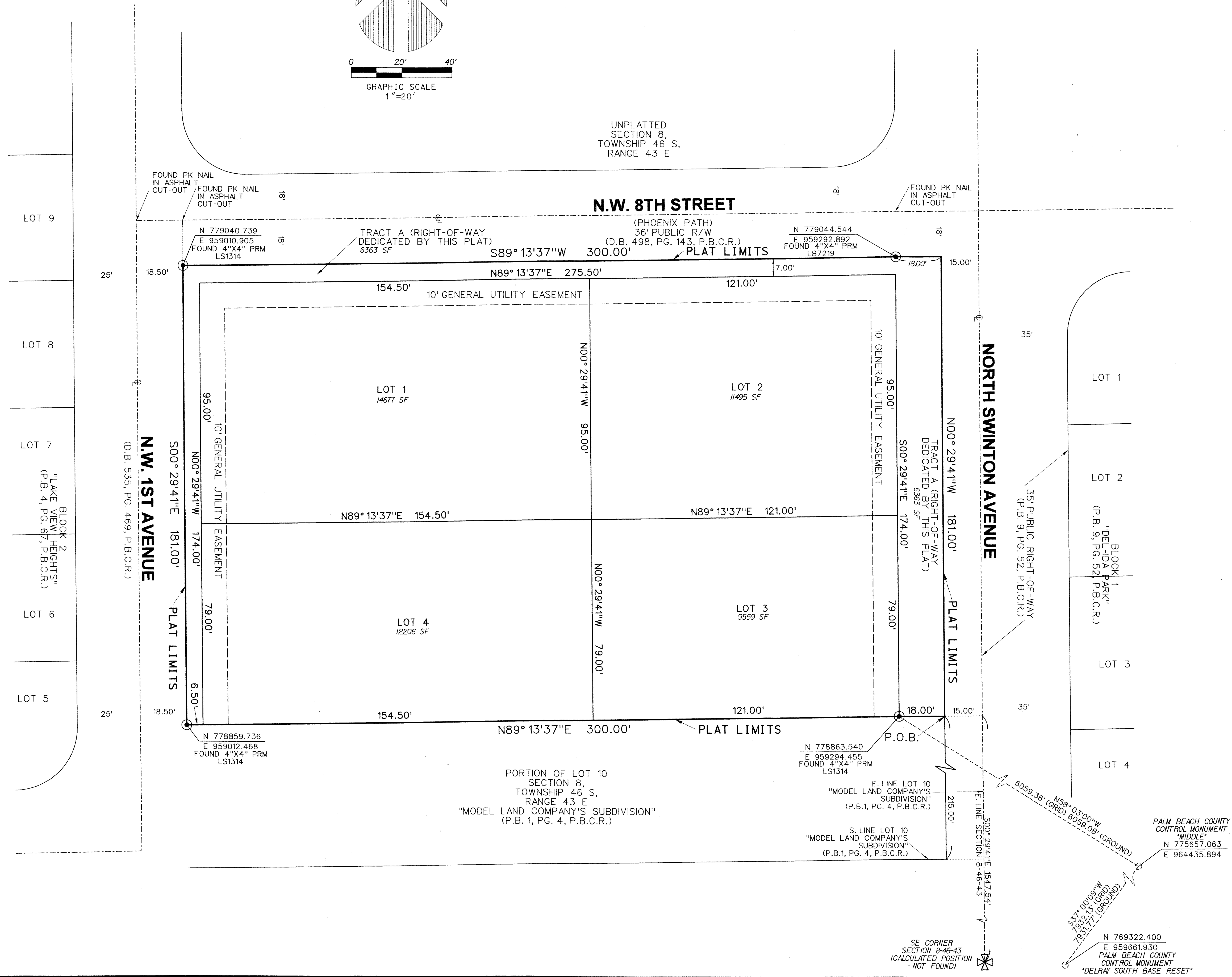
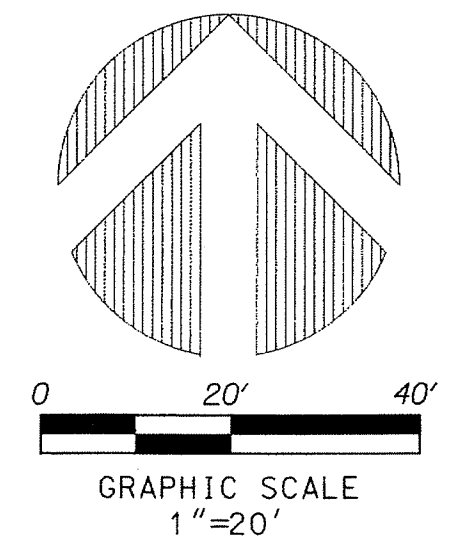


14179

PERIMETER
SURVEYING & MAPPING
 Certificate of Authorization No. LB7264
 Prepared by: Jeff S. Hodapp, P.S.M.
 947 Clint Moore Road
 Boca Raton, Florida 33487
 Tel: (561) 241-9988
 Fax: (561) 241-5182

CHEROKEE PLAT

A REPLAT OF A PORTION OF LOT 10, "MODEL LAND COMPANY'S SUBDIVISION" (P.B. 1, PG. 4, P.B.C.R.),
 IN SECTION 8, TOWNSHIP 46 SOUTH, RANGE 43 EAST,
 CITY OF DELRAY BEACH, PALM BEACH COUNTY, FLORIDA.
 JUNE, 2015



- LEGEND**
- ⊕ - CENTERLINE
 - ⊙ - PRM - SET PERMANENT REFERENCE MONUMENT
 - - LB7264, UNLESS NOTED OTHERWISE
- ABBREVIATIONS:**
- CONC. - CONCRETE
 - COR. - CORNER
 - D. - DELTA (CENTRAL ANGLE)
 - D.B. - DEED BOOK
 - D.E. - DRAINAGE EASEMENT
 - DIA. - DIAMETER
 - G.U.E. - GENERAL UTILITY EASEMENT
 - I.P. - IRON PIPE
 - IRC - IRON ROD & CAP
 - L - ARC LENGTH
 - L.B. - LICENSED BUSINESS
 - L.S. - LICENSED SURVEYOR
 - MON. - MONUMENT
 - NON-RADIAL - NON-RADIAL
 - O.R.B. - OFFICIAL RECORDS BOOK
 - P.A.E. - PUBLIC ACCESS EASEMENT
 - P.B.C.R. - PALM BEACH COUNTY RECORDS
 - P.B. - PLAT BOOK
 - PG. - PAGE
 - P.C.P. - PERMANENT CONTROL POINT
 - P.O.B. - POINT OF BEGINNING
 - P.O.C. - POINT OF COMMENCEMENT
 - P.R.M. - PERMANENT REFERENCE MONUMENT
 - P.S.M. - PROFESSIONAL SURVEYOR & MAPPER
 - R - RADIUS
 - R/W - RIGHT-OF-WAY
 - S.E. - SEWER EASEMENT
 - SEC. - SECTION
 - S.F. - SQUARE FEET
 - U.E. - UTILITY EASEMENT
 - W.E. - WATER EASEMENT

SE CORNER
 SECTION 8-46-43
 (CALCULATED POSITION
 - NOT FOUND)

PALM BEACH COUNTY
 CONTROL MONUMENT
 "MIDDLE"
 N 775657.063
 E 964435.894